

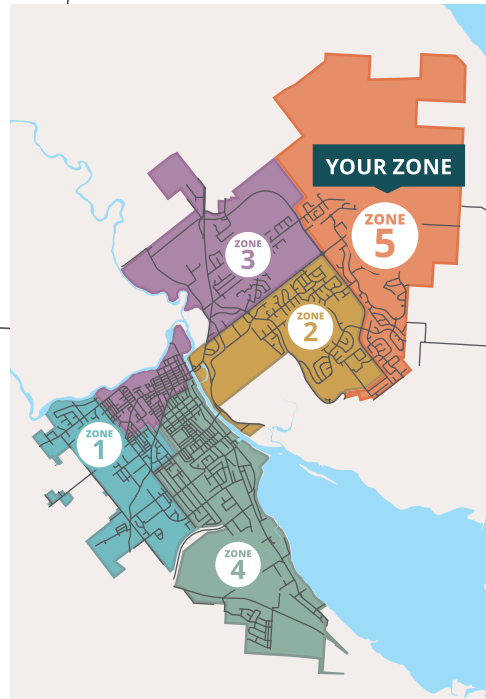
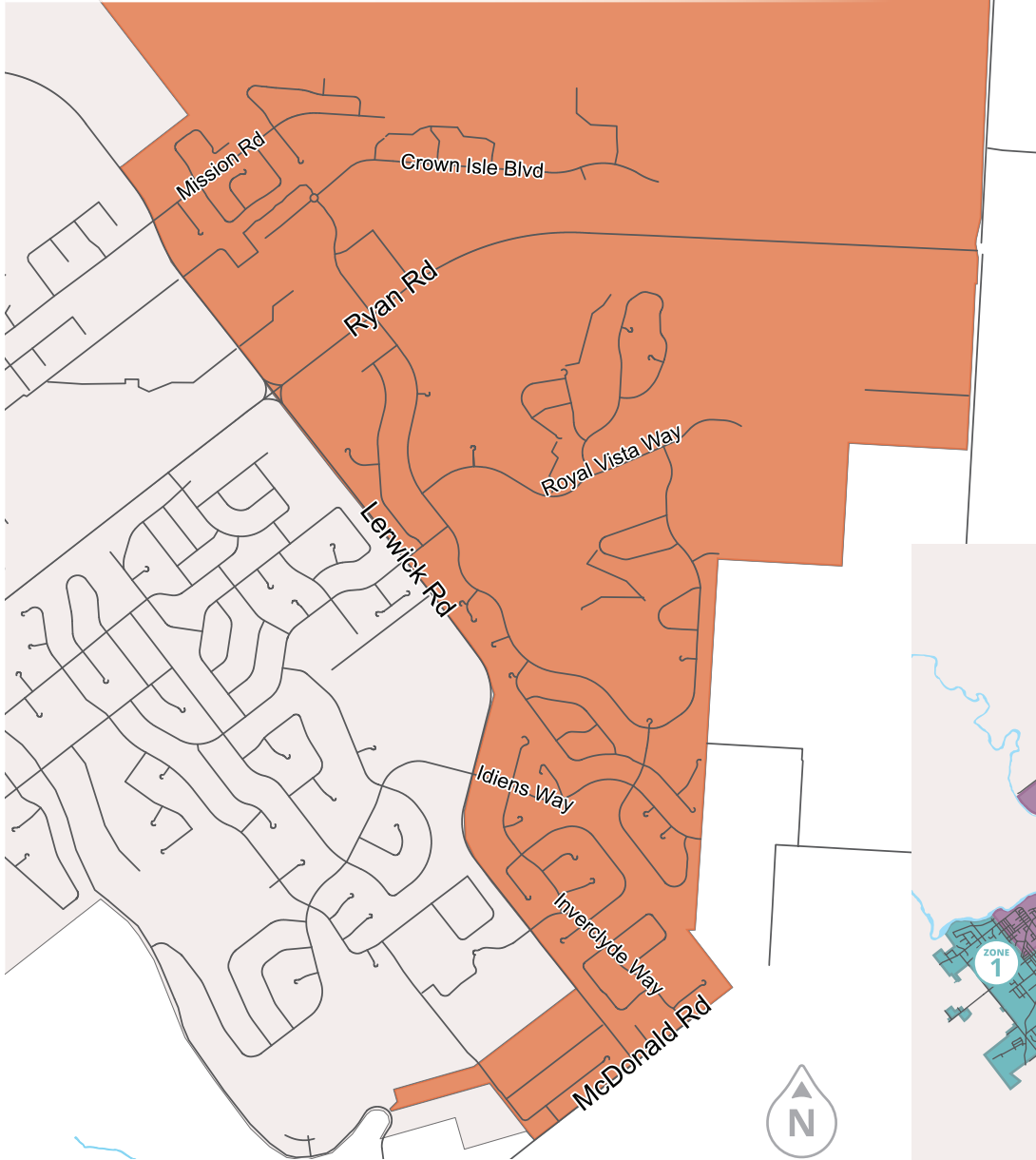
Your Collection Zone

Collection Missed? Please Call 250.338.1525



City of Courtenay

ZONE 5



Comox Valley Recycling Depots

Courtenay Return-it Depot

250.338.6013 • 493 Puntledge Road, Courtenay
Open Monday – Saturday • 9:00am to 5:00pm.
Closed on statutory holidays. www.return-it.ca

Comox Valley Waste Management Centre

250.334.6016 • 3699 Bevan Road, Cumberland
For facility status and operating hours visit www.cswm.ca

What is Recycle BC?

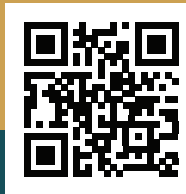
Recycle BC is a not-for-profit organization responsible for residential packaging and paper recycling throughout British Columbia. Recycle BC ensures material collected from households and recycling depots is sorted, and responsibly managed and recycled. They provide recycling services either directly to communities, or by working in partnership with local governments, First Nations, private companies, and other not-for-profit organizations. There are 183 communities who participate in recycling collection programs with Recycle BC, and even more are serviced by their recycling depots. In 2022, over 201,000 tonnes were collected from households and depots.

The program is funded by businesses, like retailers, manufacturers and restaurants that supply recyclable material to BC residents.



DOWNLOAD THE FREE APP

Get reminders right to your smart phone!



Scan with phone camera to learn more at courtenay.ca/collects

Residential Waste Collection Guide

January to December 2024

Organics • Recycling • Garbage

Schedule & Collection Zones

Automated Collection Starts January 2nd

ZONE 5



City of Courtenay

1000 Piercy Ave, Courtenay, BC • V9N 3E6
Tel 250.338.1525
Email publicworks@courtenay.ca

courtenay.ca/collects

Your Collection Schedule

Size & Weight Limits

To Be Curbside By 8am



Organics & Garbage

Organics & Recycling

Statutory Holidays

JANUARY 2024						
S	M	T	W	T	F	S
	1	2	3	4	5	
	8	9	10	11	12	
	15	16	17	18	19	
	22	23	24	25	26	
	29	30	31			

FEBRUARY 2024						
S	M	T	W	T	F	S
				1	2	
	5	6	7	8	9	
	12	13	14	15	16	
	19	20	21	22	23	
	26	27	28	29		

MARCH 2024						
S	M	T	W	T	F	S
					1	
	4	5	6	7	8	
	11	12	13	14	15	
	18	19	20	21	22	
	25	26	27	28	29	

APRIL 2024						
S	M	T	W	T	F	S
	1	2	3	4	5	
	8	9	10	11	12	
	15	16	17	18	19	
	22	23	24	25	26	
	29	30				

MAY 2024						
S	M	T	W	T	F	S
			1	2	3	
	6	7	8	9	10	
	13	14	15	16	17	
	20	21	22	23	24	
	27	28	29	30	31	

JUNE 2024						
S	M	T	W	T	F	S
	3	4	5	6	7	
	10	11	12	13	14	
	17	18	19	20	21	
	24	25	26	27	28	

JULY 2024						
S	M	T	W	T	F	S
	1	2	3	4	5	
	8	9	10	11	12	
	15	16	17	18	19	
	22	23	24	25	26	
	29	30	31			

AUGUST 2024						
S	M	T	W	T	F	S
				1	2	
	5	6	7	8	9	
	12	13	14	15	16	
	19	20	21	22	23	
	26	27	28	29	30	

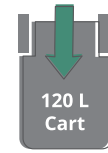
SEPTEMBER 2024						
S	M	T	W	T	F	S
	2	3	4	5	6	
	9	10	11	12	13	
	16	17	18	19	20	
	23	24	25	26	27	
	30					

OCTOBER 2024						
S	M	T	W	T	F	S
		1	2	3	4	
	7	8	9	10	11	
	14	15	16	17	18	
	21	22	23	24	25	
	28	29	30	31		

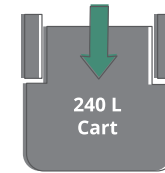
NOVEMBER 2024						
S	M	T	W	T	F	S
					1	
	4	5	6	7	8	
	11	12	13	14	15	
	18	19	20	21	22	
	25	26	27	28	29	

DECEMBER 2024						
S	M	T	W	T	F	S
	2	3	4	5	6	
	9	10	11	12	13	
	16	17	18	19	20	
	23	24	25	26	27	
	30	31				

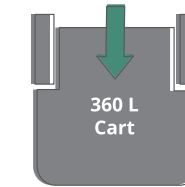
Maximum weight
55 kg (122 lb)



Maximum weight
102 kg (227 lb)



Maximum weight
146 kg (322 lb)



Organics

Acceptable:

- ✓ Leaves
- ✓ Grass clippings
- ✓ Flowers
- ✓ Plants
- ✓ Tree or hedge prunings
- ✓ Small branches up to 3"
- ✓ Food waste (fruit/veggies, eggshells, meat/bones, soiled napkins)

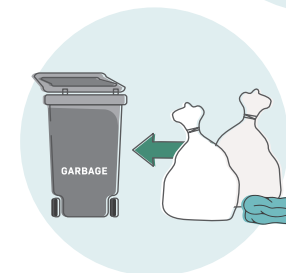
Not Acceptable:

- ✗ Biodegradable/compostable plastics
- ✗ Animal feces
- ✗ Rocks or stumps



Garbage

- ✓ Items can be placed bagged or loose in the cart.
- ✓ Please bag any personal hygiene waste.



Recycling

Note: Place mixed materials loose in cart. Do not bag items.

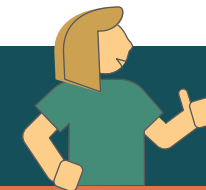
Acceptable:

- ✓ Newspapers, inserts, flyers
- ✓ Magazines, catalogues, phone books
- ✓ Boxboard boxes
- ✓ Paper egg cartons
- ✓ Paper bags
- ✓ Cartons of milk, soup, etc.
- ✓ Envelopes
- ✓ Household paper
- ✓ Cardboard boxes (max 90cm x 90cm)
- ✓ Shredded paper (contain in cardboard box. Ex. shoe box, cereal box)
- ✓ Plastic or paper take-out cups, bowls & lids
- ✓ Plastic bottles, jars & jugs
- ✓ Plastic trays & clamshells
- ✓ Plastic garden pots & seeding trays
- ✓ Metal, cans, foil wrap & take-out containers
- ✓ Caps, tops, lids and pumps
- ✓ Aerosol cans (empty)

Not Acceptable:

- ✗ Glass
- ✗ Foam packaging
- ✗ Overwrap
- ✗ Plastic bags
- ✗ Flexible plastics

Items that are not acceptable curbside can be taken to the **Recycle BC Depots**.



Missed collection - publicworks@courtenay.ca
 Damaged or misplaced carts or general questions regarding your solid waste service:
solidwaste@courtenay.ca | Public Works - 250.338.1525



When is Collection Day? Is this item recyclable? What goes in the Organics Cart?
Get all the answers. Download the Courtenay Collects App.

No smartphone? No problem! Online, phone and email alerts www.courtenay.ca/collects



No Hazardous Materials Accepted Curbside

Exclude batteries; medical sharps; bleach or aerosol containers with any contents remaining; containers with the words **COMBUSTIBLE**, **FLAMMABLE** or **VERY FLAMMABLE** on them (except cosmetic and beauty product containers); compressed gas cylinders, for example used propane cylinders; containers for paint, motor oil, vehicle lubricants, or antifreeze; or containers for pesticides with the words **DANGER**, **WARNING**, or **POISON**, and precautionary octagon or diamond symbols with skull and cross bones.