

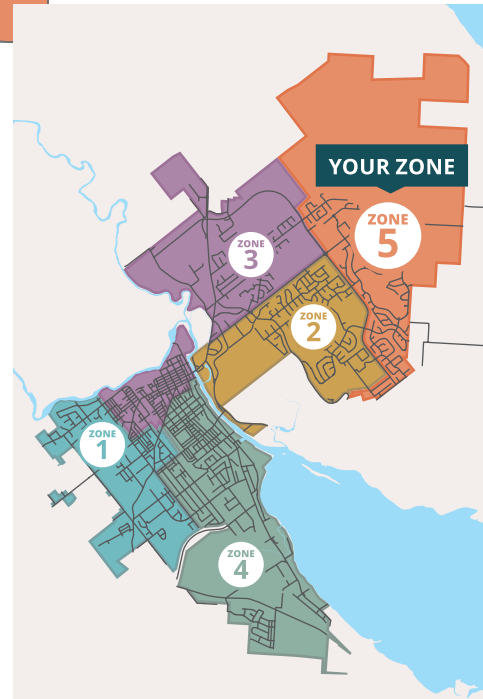
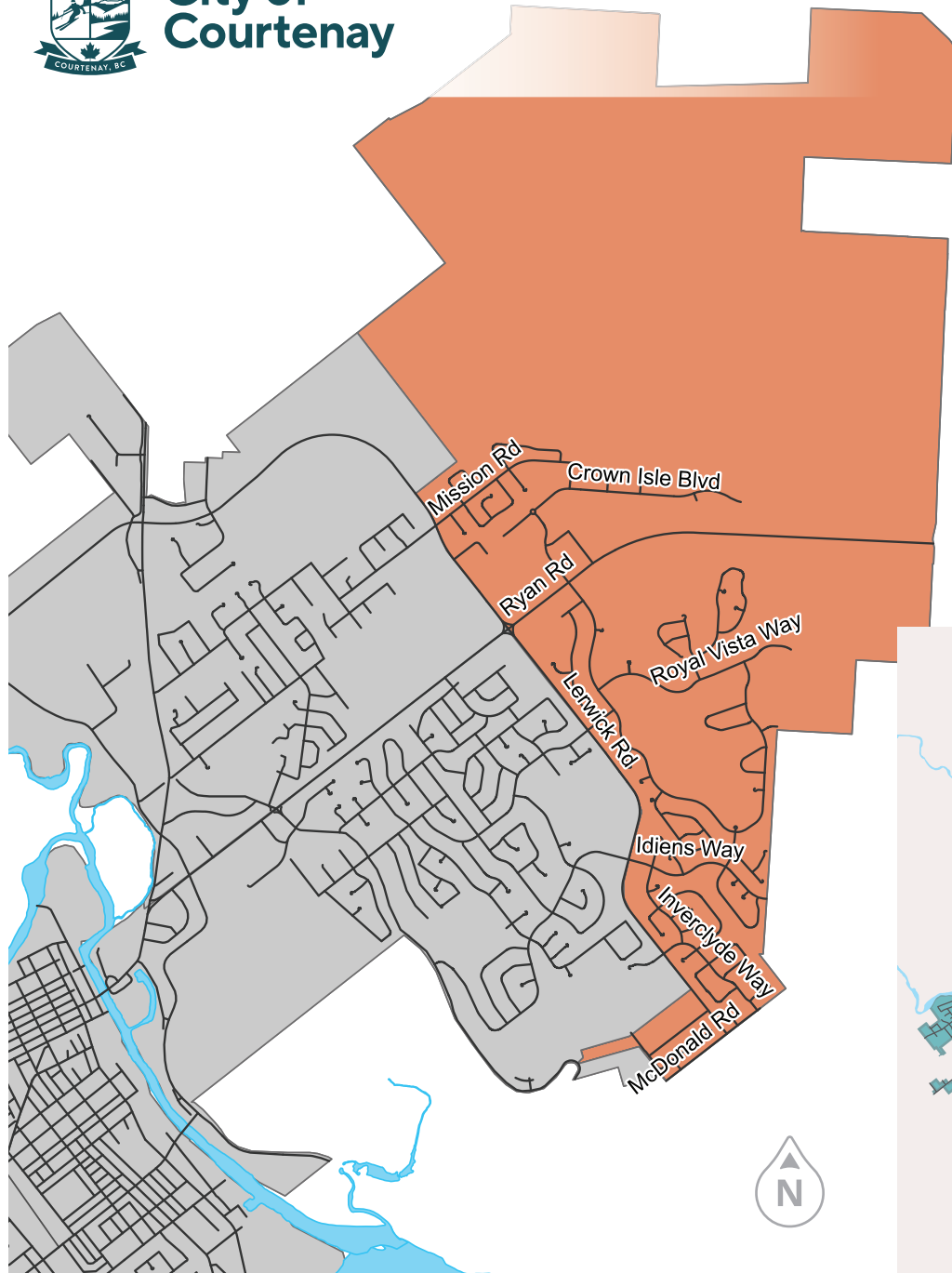
Your Collection Zone

Collection missed? Please call 250.338.1525



City of Courtenay

ZONE 5



Comox Valley Recycling Depots

Courtenay Return-it Depot

250.338.6013 • 493 Puntledge Road, Courtenay
Open Monday – Saturday • 9:00 a.m. – 5:00 p.m
Closed on statutory holidays. www.return-it.ca

Comox Valley Waste Management Centre

250.334.6016 • 3699 Bevan Road, Cumberland
For facility status and operating hours visit www.cswm.ca

What is Recycle BC?

Recycle BC is a not-for-profit organization responsible for residential packaging and paper recycling throughout British Columbia. Recycle BC ensures material collected from households and recycling depots is sorted, and responsibly managed and recycled. They provide recycling services either directly to communities, or by working in partnership with local governments, First Nations, private companies and other not-for-profit organizations. There are 196 communities who participate in recycling collection programs with Recycle BC, and even more are serviced by their recycling depots. Each year, over 200,000 tonnes of material is collected from households and depots.

The program is funded by businesses, like retailers, manufacturers and restaurants that supply recyclable material to BC residents.



DOWNLOAD THE FREE APP

Get reminders right to your smart phone!



Scan with phone camera to learn more at courtenay.ca/collects

Residential Waste Collection Guide

January to December 2025

Organics • Recycling • Garbage

Schedule & Collection Zones

ZONE 5



City of Courtenay

1000 Piercy Avenue, Courtenay, BC • V9N 3E6
Tel 250.338.1525
Email operations@courtenay.ca

courtenay.ca/collects

Your Collection Schedule

Size & Weight Limits

To Be Curbside By 8am



Organics & Garbage

Organics & Recycling

Statutory Holidays

JANUARY 2025

S	M	T	W	T	F	S
		1	2	3		
6	7	8	9	10		
13	14	15	16	17		
20	21	22	23	24		
27	28	29	30	31		

FEBRUARY 2025

S	M	T	W	T	F	S
	3	4	5	6	7	
10	11	12	13	14		
17	18	19	20	21		
24	25	26	27	28		

MARCH 2025

S	M	T	W	T	F	S
	3	4	5	6	7	
10	11	12	13	14		
17	18	19	20	21		
24	25	26	27	28		
31						

APRIL 2025

S	M	T	W	T	F	S
	1	2	3	4		
7	8	9	10	11		
14	15	16	17	18		
21	22	23	24	25		
28	29	30				

MAY 2025

S	M	T	W	T	F	S
				1	2	
5	6	7	8	9		
12	13	14	15	16		
19	20	21	22	23		
26	27	28	29	30		

JUNE 2025

S	M	T	W	T	F	S
	2	3	4	5	6	
9	10	11	12	13		
16	17	18	19	20		
23	24	25	26	27		
30						

JULY 2025

S	M	T	W	T	F	S
	1	2	3	4		
7	8	9	10	11		
Schedule changes planned.						
21	22	23	24	25		
28	29	30	31			

AUGUST 2025

S	M	T	W	T	F	S
						1
4	5	6	7	8		
Schedule changes planned.						
18	19	20	21	22		
25	26	27	28	29		

SEPTEMBER 2025

S	M	T	W	T	F	S
1	2	3	4	5		
8	9	10	11	12		
Schedule changes planned.						
22	23	24	25	26		
29	30					

OCTOBER 2025

S	M	T	W	T	F	S
		1	2	3		
6	7	8	9	10		
Schedule changes planned.						
20	21	22	23	24		
27	28	29	30	31		

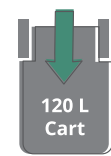
NOVEMBER 2025

S	M	T	W	T	F	S
3	4	5	6	7		
10	11	12	13	14		
Schedule changes planned.						
24	25	26	27	28		

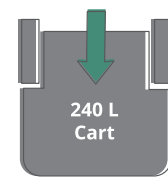
DECEMBER 2025

S	M	T	W	T	F	S
1	2	3	4	5		
8	9	10	11	12		
Schedule changes planned.						
22	23	24	25	26		
29	30	31				

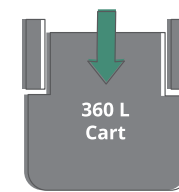
Maximum weight 55 kg (122 lb)



Maximum weight 102 kg (227 lb)



Maximum weight 146 kg (322 lb)



Organics

Acceptable:

- ✓ Leaves
- ✓ Grass clippings
- ✓ Flowers
- ✓ Plants
- ✓ Tree or hedge prunings
- ✓ Small branches up to 3"
- ✓ Food waste (fruit/veggies, eggshells, meat/bones, soiled napkins)

Not Acceptable:

- ✗ Biodegradable/compostable plastics
- ✗ Animal feces
- ✗ Rocks or stumps
- ✗ Large amounts of dirt/soil
- ✗ Large amounts of sod



Garbage

- ✓ Items can be placed, bagged or loose, in the cart.
- ✓ Please bag any personal hygiene waste.



Recycling

Note: Place mixed materials loose in cart. Do not bag items.

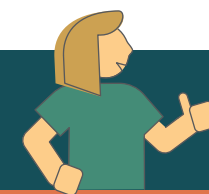
Acceptable:

- ✓ Newspapers, inserts, flyers
- ✓ Magazines, catalogues, phone books
- ✓ Boxboard boxes
- ✓ Paper egg cartons
- ✓ Paper bags
- ✓ Cartons of milk, soup, etc.
- ✓ Envelopes
- ✓ Household paper
- ✓ Cardboard boxes (max 90cm x 90cm)
- ✓ Shredded paper (contain in cardboard box, e.g. shoe box, cereal box)
- ✓ Plastic or paper take-out cups, bowls & lids
- ✓ Plastic bottles, jars & jugs
- ✓ Plastic trays & clamshells
- ✓ Plastic garden pots & seedling trays
- ✓ Metal, cans, foil wrap & take-out containers
- ✓ Caps, tops, lids & pumps
- ✓ Aerosol cans (empty)

Not Acceptable:

- ✗ Glass
- ✗ Foam packaging
- ✗ Overwrap
- ✗ Plastic bags
- ✗ Flexible plastics

Items that are not acceptable curbside can be taken to the **Recycle BC Depots**.



Missed collection - operations@courtenay.ca
 Damaged or misplaced carts or general questions regarding your solid waste service:
operations@courtenay.ca | Operational Services - 250.338.1525



When is Collection Day? Is this item recyclable? What goes in the Organics Cart? Get all the answers. Download the Courtenay Collects App.

No smartphone? No problem! Online, phone and email alerts www.courtenay.ca/collects



No Hazardous Materials Accepted Curbside

Exclude batteries; medical sharps; bleach or aerosol containers with any contents remaining; containers with the words COMBUSTIBLE, FLAMMABLE or VERY FLAMMABLE on them (except cosmetic and beauty product containers); compressed gas cylinders, for example used propane cylinders; containers for paint, motor oil, vehicle lubricants, or antifreeze; or containers for pesticides with the words DANGER, WARNING or POISON, and precautionary octagon or diamond symbols with skull and cross bones.