



BRIEFING NOTE

To: Council
From: Chief Administrative Officer
Subject: Official Community Plan (OCP) Interim Report (Phase 1)

File No.: 6480-00
Date: February 18, 2020

POLICY IMPLICATIONS:

City of Courtenay Strategic Priorities 2019 - 2022

We support diversity in housing and reasoned land use planning

- Complete an update of the City's OCP and Zoning Bylaws

Council Strategic Priorities Chart, November 2019

- (NOW)** 1. OCP – Consultation Process (public input/consult report) ●

ISSUE:

The purpose of this Briefing Note is to provide Council with an update on the Official Community Plan (OCP) project and review of the major outcomes of the Phase 1 background research report prior to the “Ideas Fair” on February 19.

BACKGROUND:

Staff and the consultant (Project Team) have successfully completed Phase 1 of the OCP Update project which involved summarizing various background data and trends, and modelling our greenhouse gas emissions profile for the 2016 baseline year and a forecast to 2051 under existing business as usual conditions. The Phase 1 report also identifies emerging themes based on the research that captures some of the trends and the challenges/opportunities that the OCP process may consider.

Since the project commenced last fall, the launch of the project website, development of a short promotional video by Council, and the formation of the OCP Advisory Committee have helped increase community interest in the project. The Project Team will continue to reach out to the public as well as neighbouring municipalities, government departments and agencies, local businesses and advocacy groups in order to maximize opportunities to participate in the OCP development process.

To this end, one of the key project milestones is an official public launch and “Ideas Fair”. This all day drop-in community event is scheduled on February 19th from 10 a.m. to 8 p.m. at Florence Filberg Centre. Members of the community are strongly encouraged to attend to learn about community growth trends and share ideas for the future through interactive activities.

KEY CONSIDERATIONS/NEXT STEPS:

- The consultant will presents a summary of the major outcomes identified in the Phase 1 Background Research Report at the February 18, 2020 Council meeting;
- Public launch and “Ideas Fair” – February 19th at the Florence Filberg Centre;

- City Staff and the team of consultants will begin to work on establishment of low carbon growth scenarios following the public launch; and
- A series of neighbourhood consultation sessions will be planned in the spring once several growth scenarios are established to help inform planning policies and develop an implementation plan.

Prepared by:



Tatsuyuki Setta, RPP, MCIP
Manager of Community and Sustainability Planning

Reviewed by:



Ian Buck, RPP, MCIP
Director of Development Services



COURTENAY OFFICIAL COMMUNITY PLAN

BACKGROUND RESEARCH & UPCOMING ENGAGEMENT

PLANNING PROCESS



WE ARE HERE

NOV - FEB 2020	FEB - APR 2020	APR - JUN 2020	JUL - NOV 2020	DEC - APR 2021
PROJECT LAUNCH	CITY-WIDE VISION AND GROWTH SCENARIOS	NEIGHBOURHOOD PLANNING	DRAFT PLAN	FINAL PLAN

THE CLIMATE CRISIS HAS ARRIVED IN COURTENAY



TRANSPORTATION IS THE LARGEST CHALLENGE AND THE GREATEST OPPORTUNITY



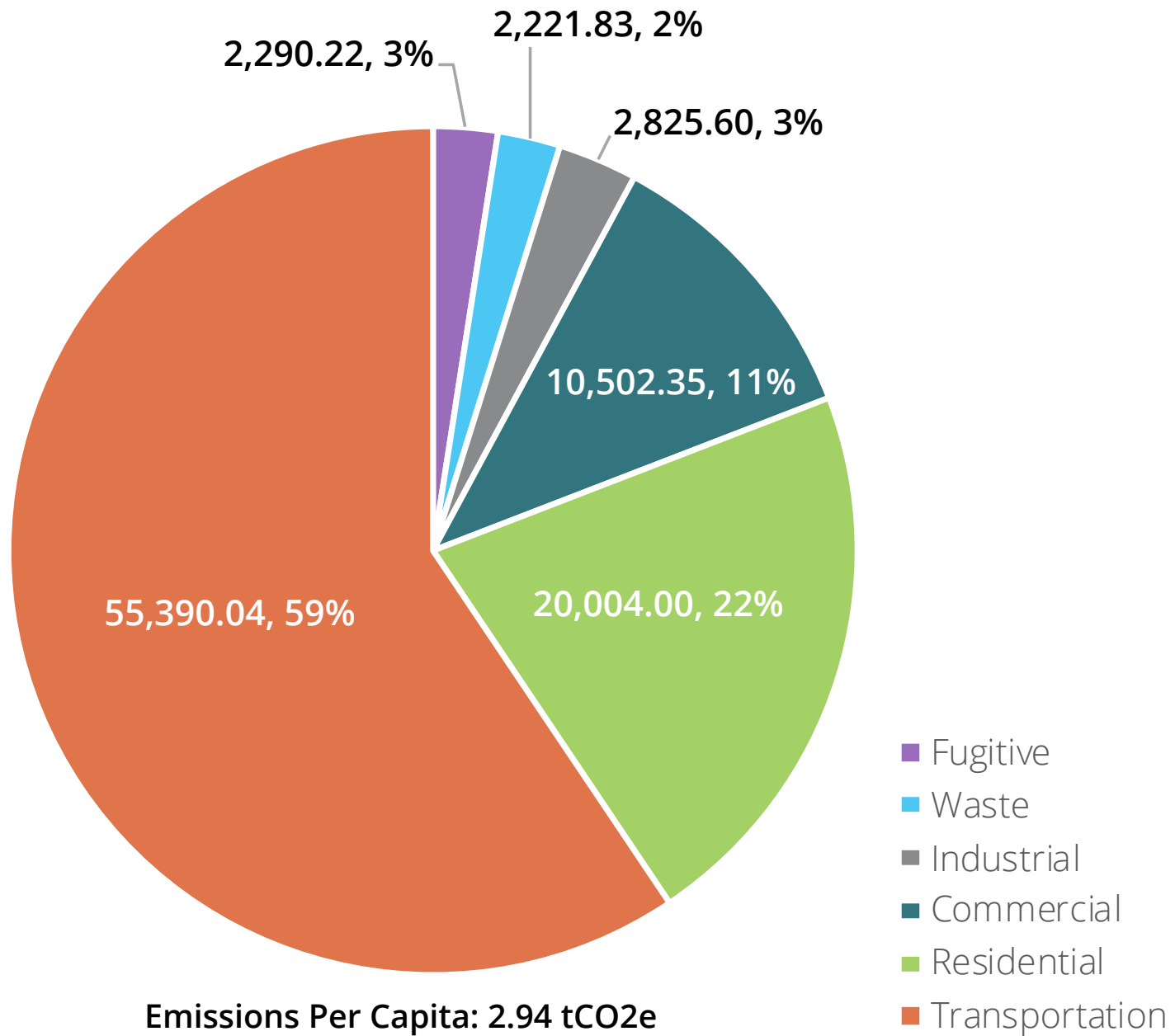
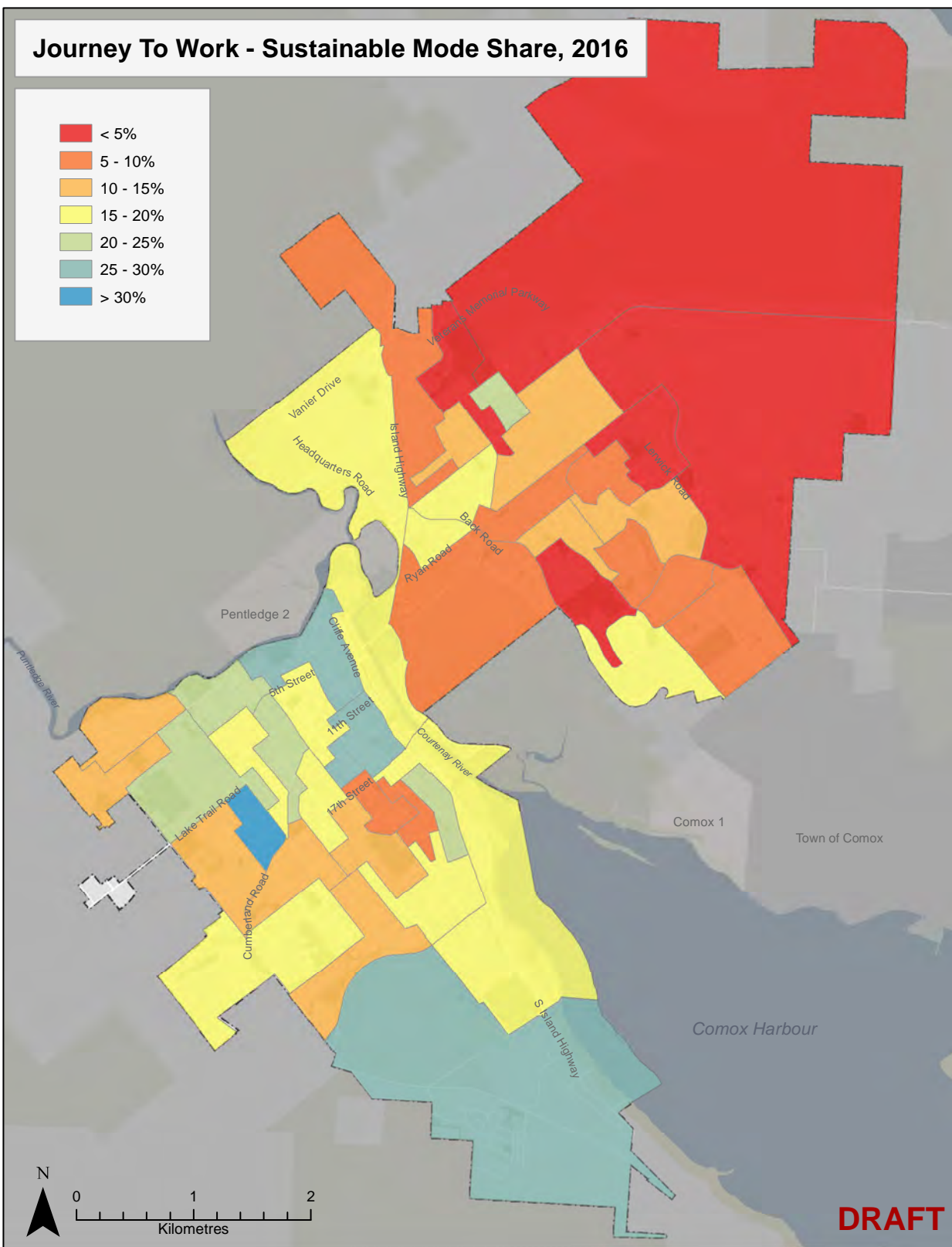


Figure 2.1 - Courtenay Emissions By Sector for Baseline Year 2016.

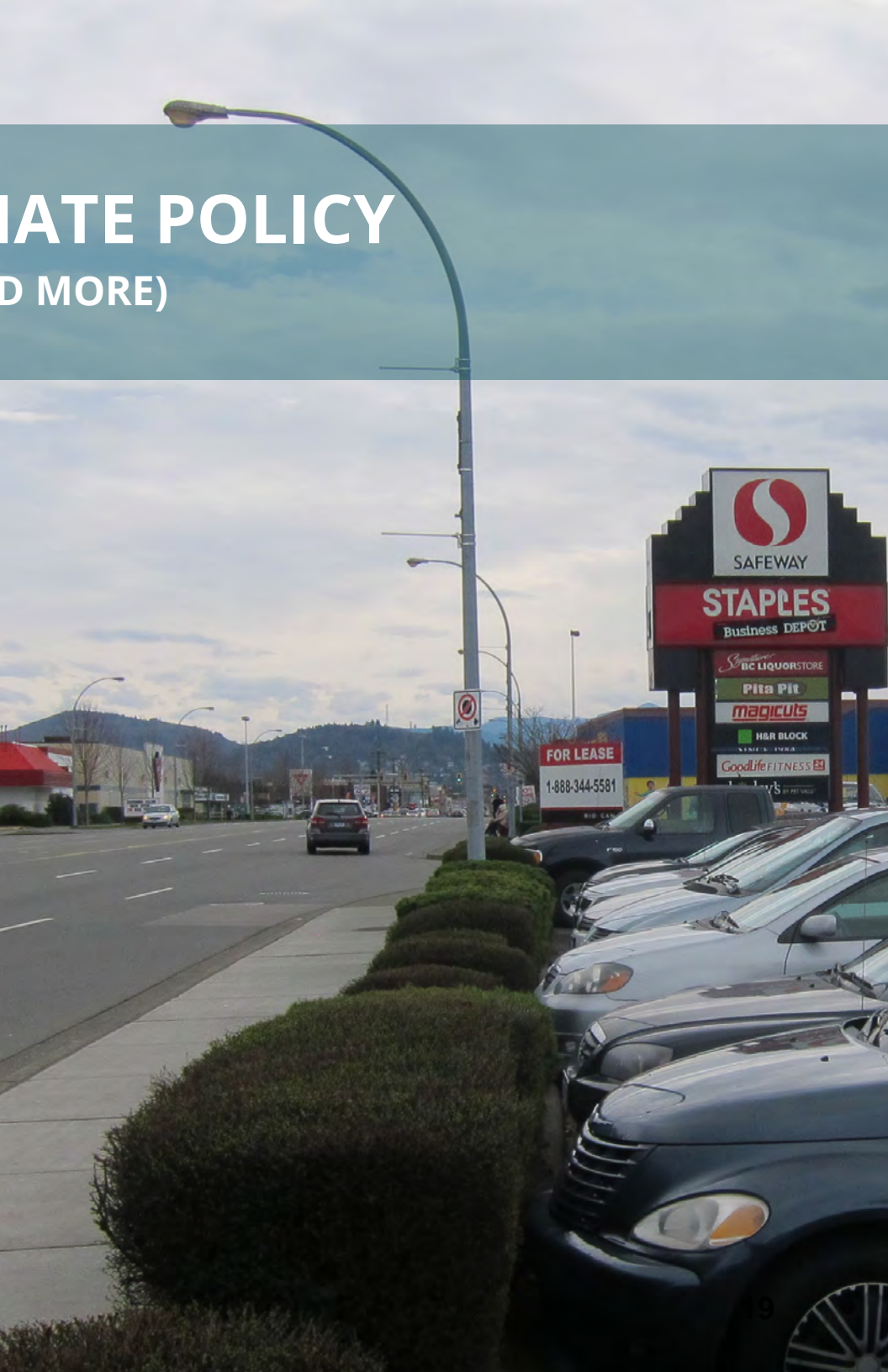
Journey To Work - Sustainable Mode Share, 2016

- < 5%
- 5 - 10%
- 10 - 15%
- 15 - 20%
- 20 - 25%
- 25 - 30%
- > 30%



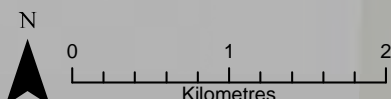
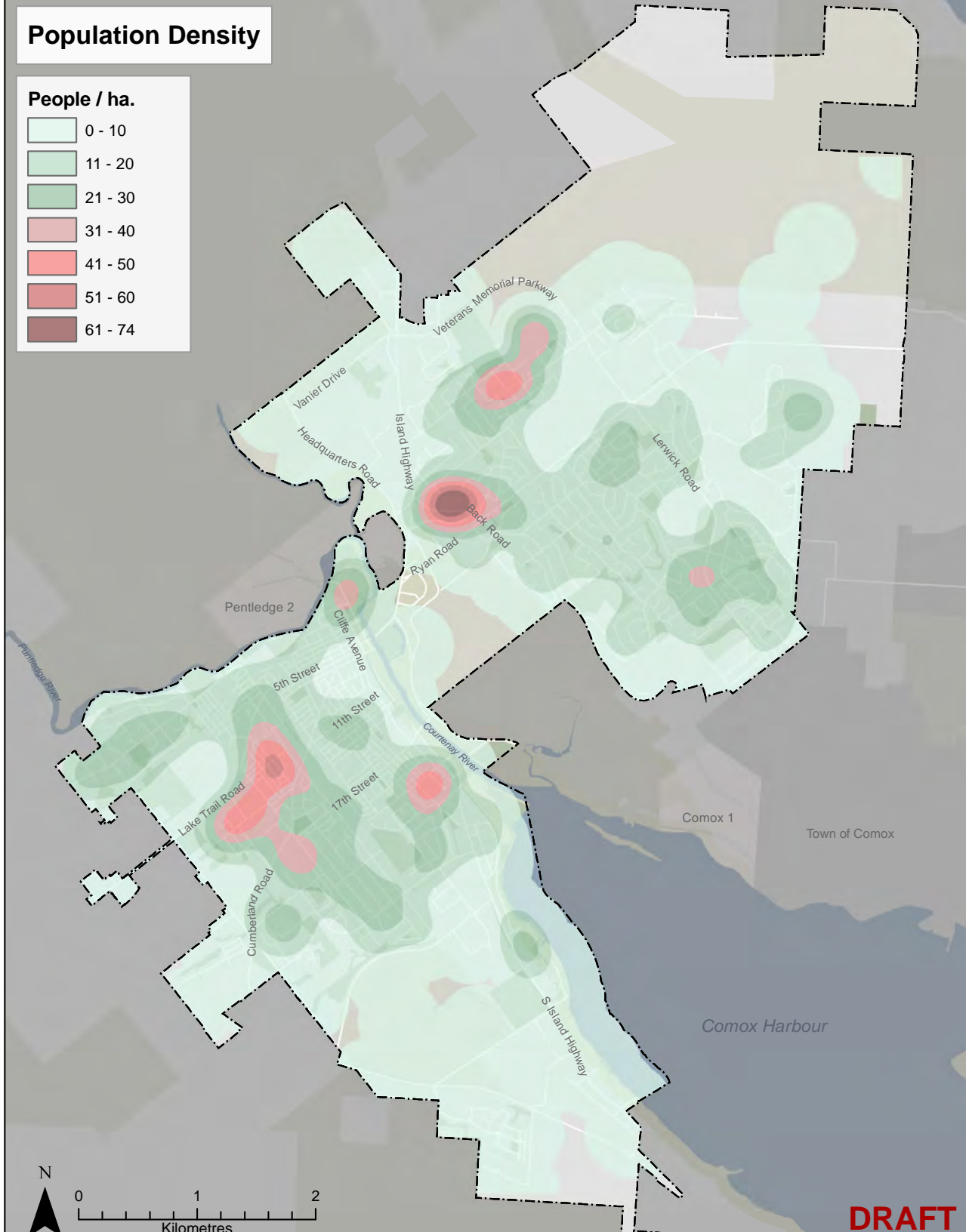
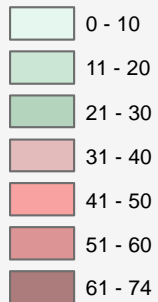
DRAFT

LAND USE POLICY IS CLIMATE POLICY (AND HEALTH POLICY, SOCIAL POLICY, AND MORE)



Population Density

People / ha.

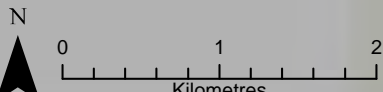
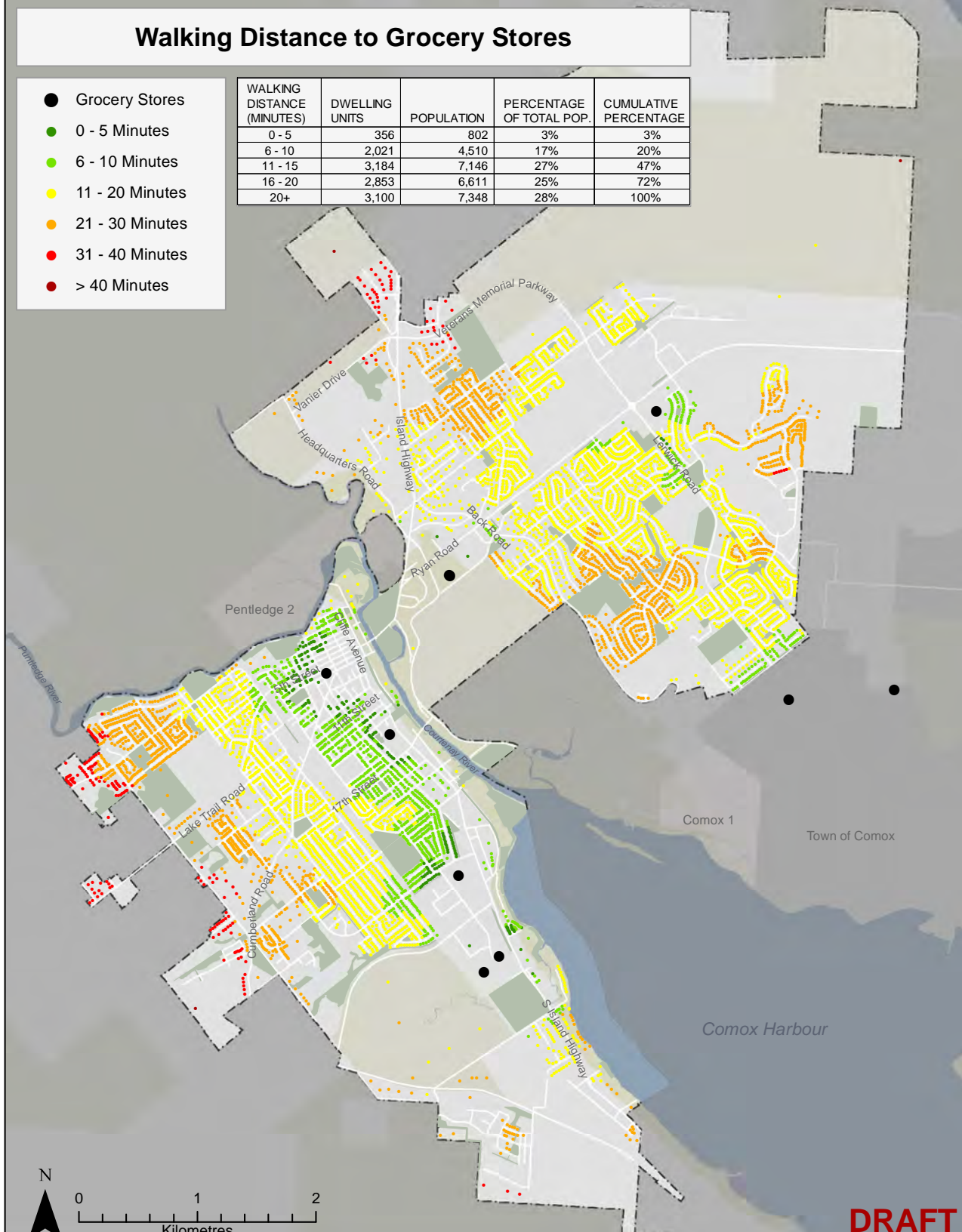


DRAFT

Walking Distance to Grocery Stores

- Grocery Stores
- 0 - 5 Minutes
- 6 - 10 Minutes
- 11 - 20 Minutes
- 21 - 30 Minutes
- 31 - 40 Minutes
- > 40 Minutes

WALKING DISTANCE (MINUTES)	DWELLING UNITS	POPULATION	PERCENTAGE OF TOTAL POP.	CUMULATIVE PERCENTAGE
0 - 5	356	802	3%	3%
6 - 10	2,021	4,510	17%	20%
11 - 15	3,184	7,146	27%	47%
16 - 20	2,853	6,611	25%	72%
20+	3,100	7,348	28%	100%



DRAFT



5th Street

5 mins



Moray Ave

7 mins



Perth Place

14 mins

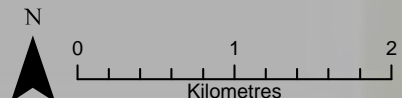
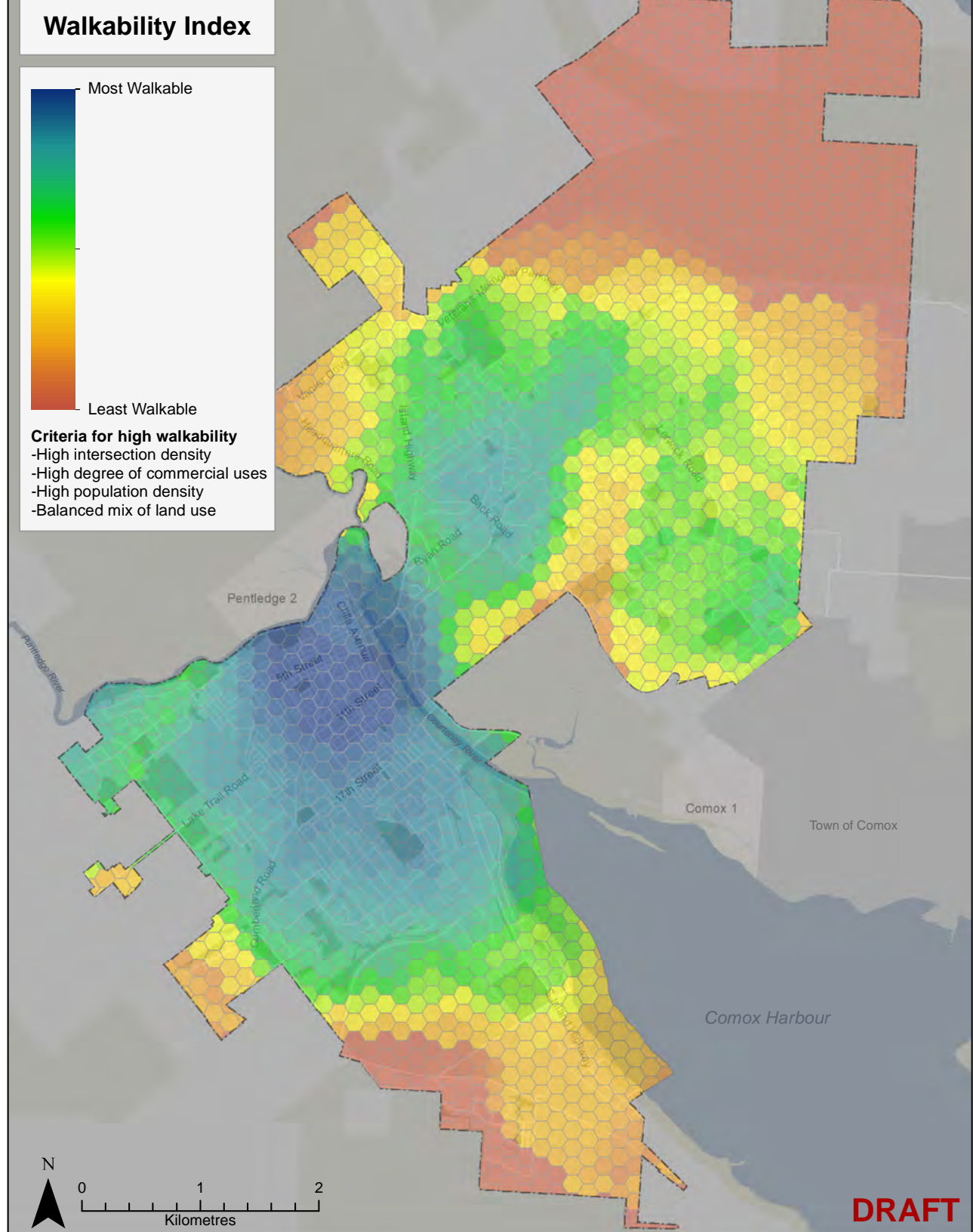
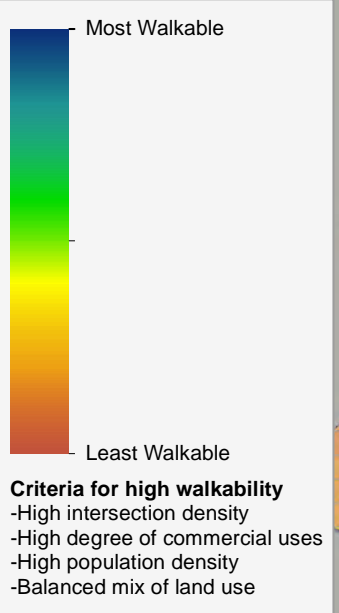
An aerial photograph of a coastal city, likely Seattle, showing a large bay in the foreground, a dense urban area in the middle ground, and green fields and forests in the background. The city is built on a peninsula and extends into the water. The surrounding area is a mix of green fields and forests. The text "GROWTH HAS BECOME LESS EFFICIENT OVER TIME" is overlaid on the top half of the image.

GROWTH HAS BECOME LESS EFFICIENT OVER TIME

DOWNTOWN IS A STRENGTH AND A PRECEDENT



Walkability Index



DRAFT

THE CITY HAS ACCESS AND CHOICE, BUT NOT IN EVERY NEIGHBOURHOOD



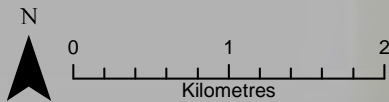
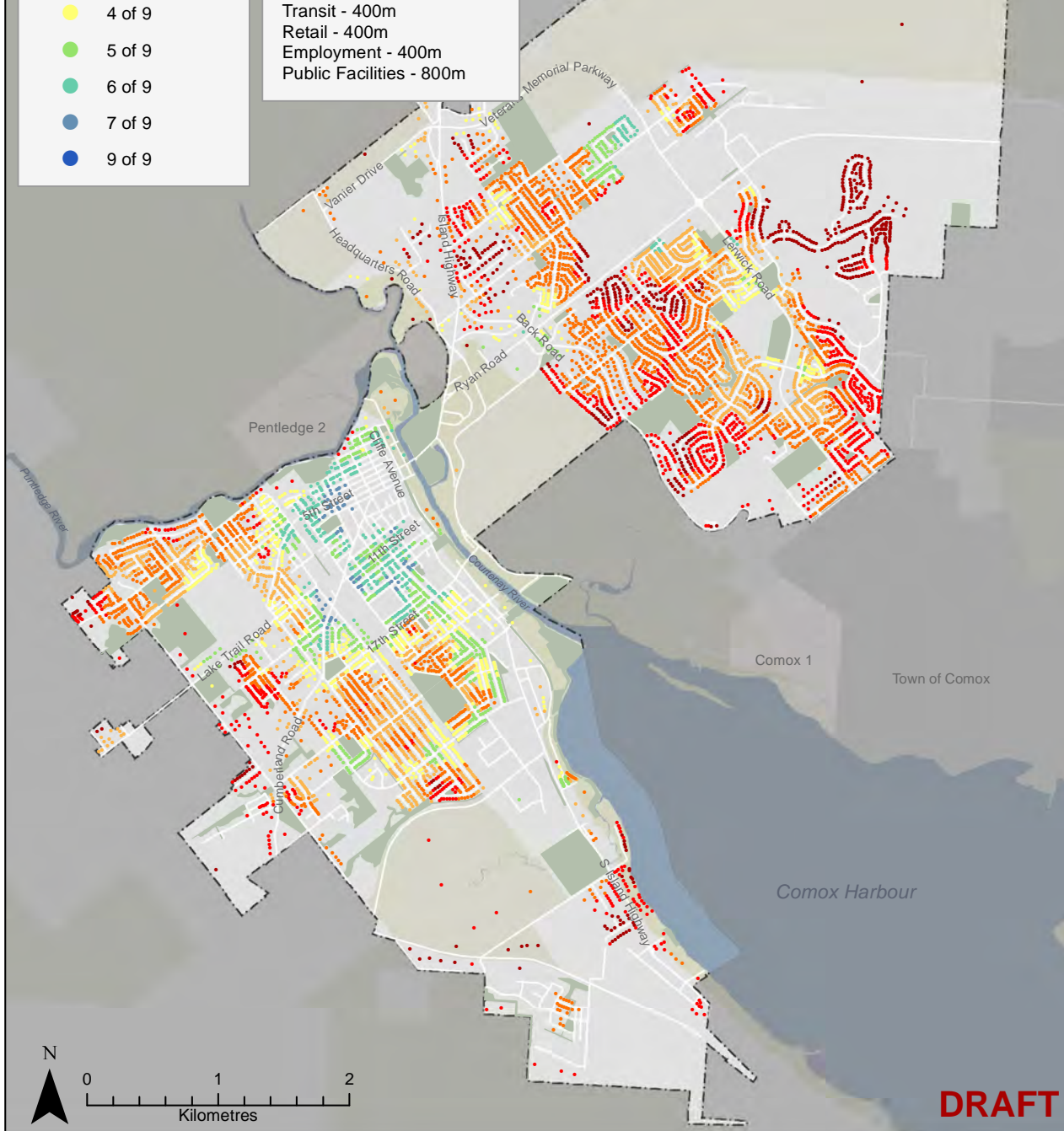
Daily Needs Accessible

- 0 of 9
- 1 of 9
- 2 of 9
- 3 of 9
- 4 of 9
- 5 of 9
- 6 of 9
- 7 of 9
- 9 of 9

Daily Needs and Distances:

- Childcare - 400m
- Elementary Schools - 400m
- Secondary Schools - 800m
- Grocery - 400m
- Parks - 400m
- Transit - 400m
- Retail - 400m
- Employment - 400m
- Public Facilities - 800m

NUMBER OF AMENITIES	DWELLING UNITS	POPULATION	PERCENTAGE OF TOTAL POP.	CUMULATIVE PERCENTAGE
0	1,082	2,458	9%	100%
1	1,477	3,362	13%	91%
2	3,239	7,516	29%	78%
3	2,121	4,899	19%	49%
4	1,894	4,253	16%	31%
5	889	2,048	8%	15%
6	631	1,459	6%	7%
7	181	422	2%	1%
8	-	-	0%	0%
9	-	-	0%	0%



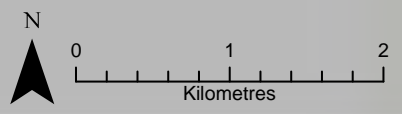
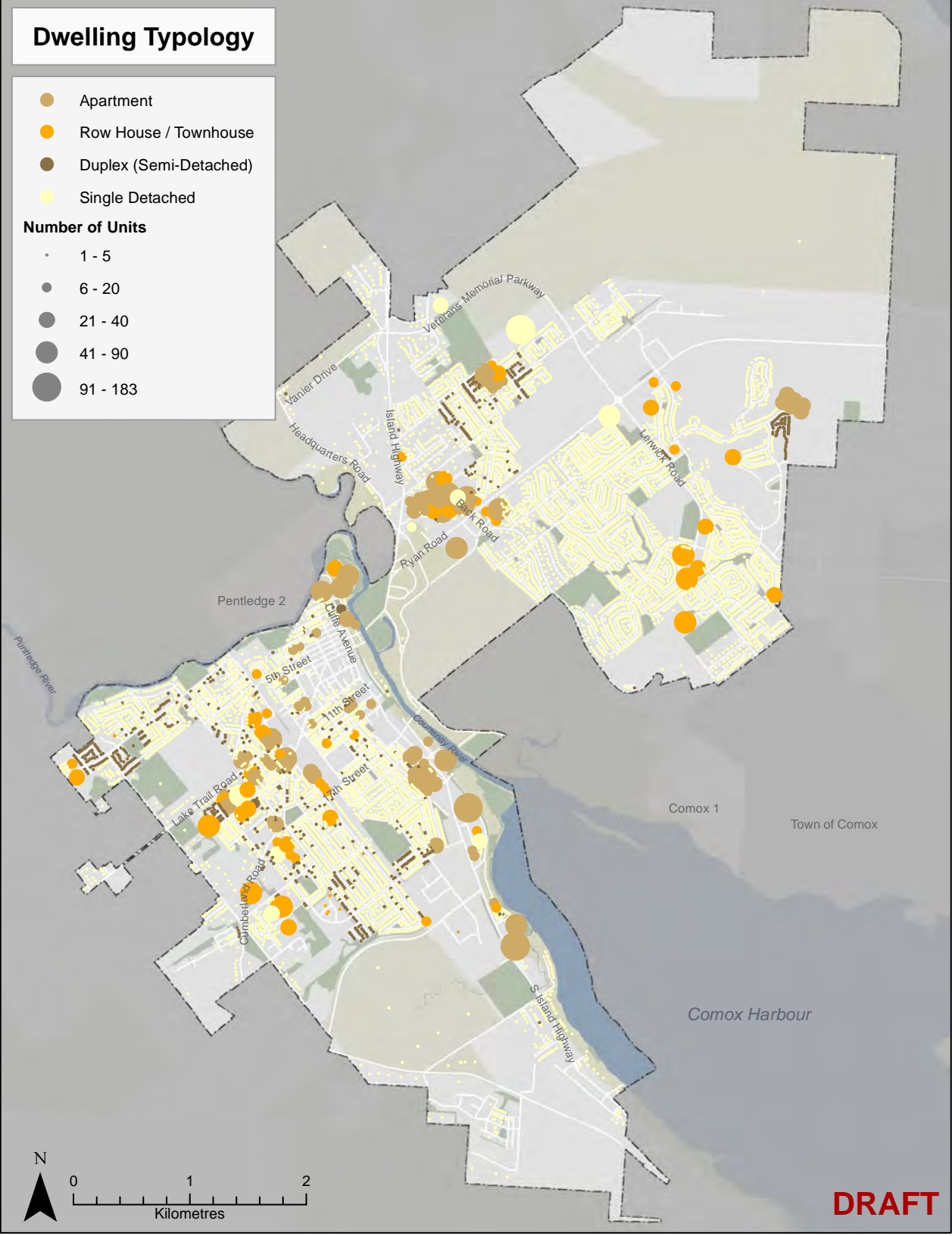
DRAFT

Dwelling Typology

- Apartment
- Row House / Townhouse
- Duplex (Semi-Detached)
- Single Detached

Number of Units

- 1 - 5
- 6 - 20
- 21 - 40
- 41 - 90
- 91 - 183



DRAFT

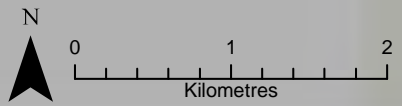
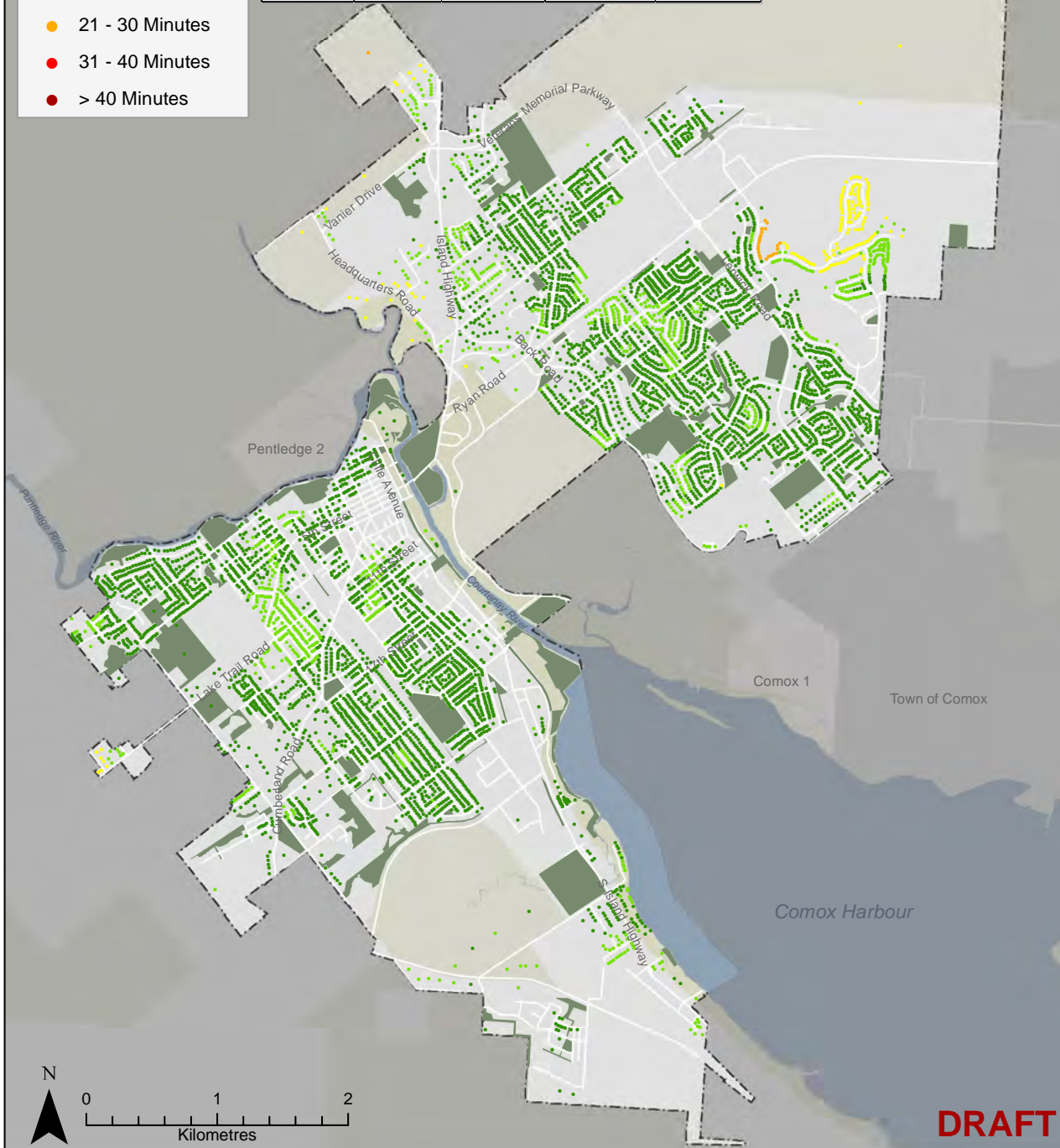


**LOCAL ECOLOGY OFFERS BOTH
UNIQUE CHARACTER AND
THE VITAL SERVICES OF NATURE**

Walking Distance to Public Parks

- Parks
- 0 - 5 Minutes
- 6 - 10 Minutes
- 11 - 20 Minutes
- 21 - 30 Minutes
- 31 - 40 Minutes
- > 40 Minutes

WALKING DISTANCE (MINUTES)	DWELLING UNITS	POPULATION	PERCENTAGE OF TOTAL POP.	CUMULATIVE PERCENTAGE
0 - 5	9,203	21,176	80%	80%
6 - 10	2,044	4,637	18%	98%
11 - 15	187	422	2%	100%
16 - 20	56	127	0%	100%
20+	24	55	0%	100%



DRAFT

COURTENAY'S PEOPLE ARE AT THE HEART OF THIS OCP'S SUCCESS





PUBLIC IDEAS FAIR!

Tomorrow | 10am-8pm | Florence Filberg Centre

NEXT STEPS



NOV - FEB 2020	FEB - APR 2020	APR - JUN 2020	JUL - NOV 2020	DEC - APR 2021
PROJECT LAUNCH	CITY-WIDE VISION AND GROWTH SCENARIOS	NEIGHBOURHOOD PLANNING	DRAFT PLAN	FINAL PLAN